



源泰德润  
YUAN TAI DE RUN



Tianjin Yuantai Derun Steel Pipe Manufacturing Group Co., Ltd.

天津源泰德润钢管制造集团有限公司

天津源泰德润钢管制造集团有限公司

Tianjin Yuantai Derun Steel Pipe Manufacturing Group Co., Ltd.

Tel: 008622-58951960/5895161/58951962/58951963

Fax: 008622-58951959

Add: Daqiuzhuang industrial zone Tianjin China

Email: sales@ytdrgg.com

Website: <http://www.ytdrintl.com>

Mobile/Whatsapp: +8613682051821

中国生产规模最大的结构钢管制造集团

The largest manufacturer of steel hollow section in China

中国民营企业500强

Top 500 Private Enterprises in China

中国制造业500强

Top 500 Manufacturing Enterprises in China

## CONTENTS

- |    |                                 |    |                            |
|----|---------------------------------|----|----------------------------|
| 03 | 集团简介<br>GROUP PROFILE           | 11 | 生产工艺<br>PRODUCTION PROCESS |
| 05 | 原材料与库房<br>RAW MATERIALS & STOCK | 21 | 板卷<br>COIL&SHEET           |
| 07 | 生产基地<br>PRODUCTION BASE         | 25 | 型材<br>STEEL PROFILES       |
| 09 | 生产设备<br>PRODUCTION EQUIPMENT    | 27 | 工程案例<br>PROJECT            |
| 13 | 钢管<br>PIPE&TUBE                 | 29 | 合作商<br>COOPERATION         |
| 31 | 证书荣誉<br>CERTIFICATE             | 33 | 市场分布<br>MARKET             |



## GROUP PROFILE

Tianjin Yuan tai Derun steel pipe Group (YUTANTAI) was founded in 2002. It is located in the largest steel pipe industrial base Tianjin Daqiu Zhuang Industrial Zone in China. YUTANTAI is one of the top 500 private enterprises in China and one of the top 500 manufacturing enterprises in China. It is a 5A level unit for operation and management, and a 3A level unit with the highest credit. The group has passed ISO9001 certification, ISO14001 certification, OHSAS18001 certification, EU CE10219/10210 certification, BV certification, JIS certification, DNV certification, ABS certification, LEED certification.

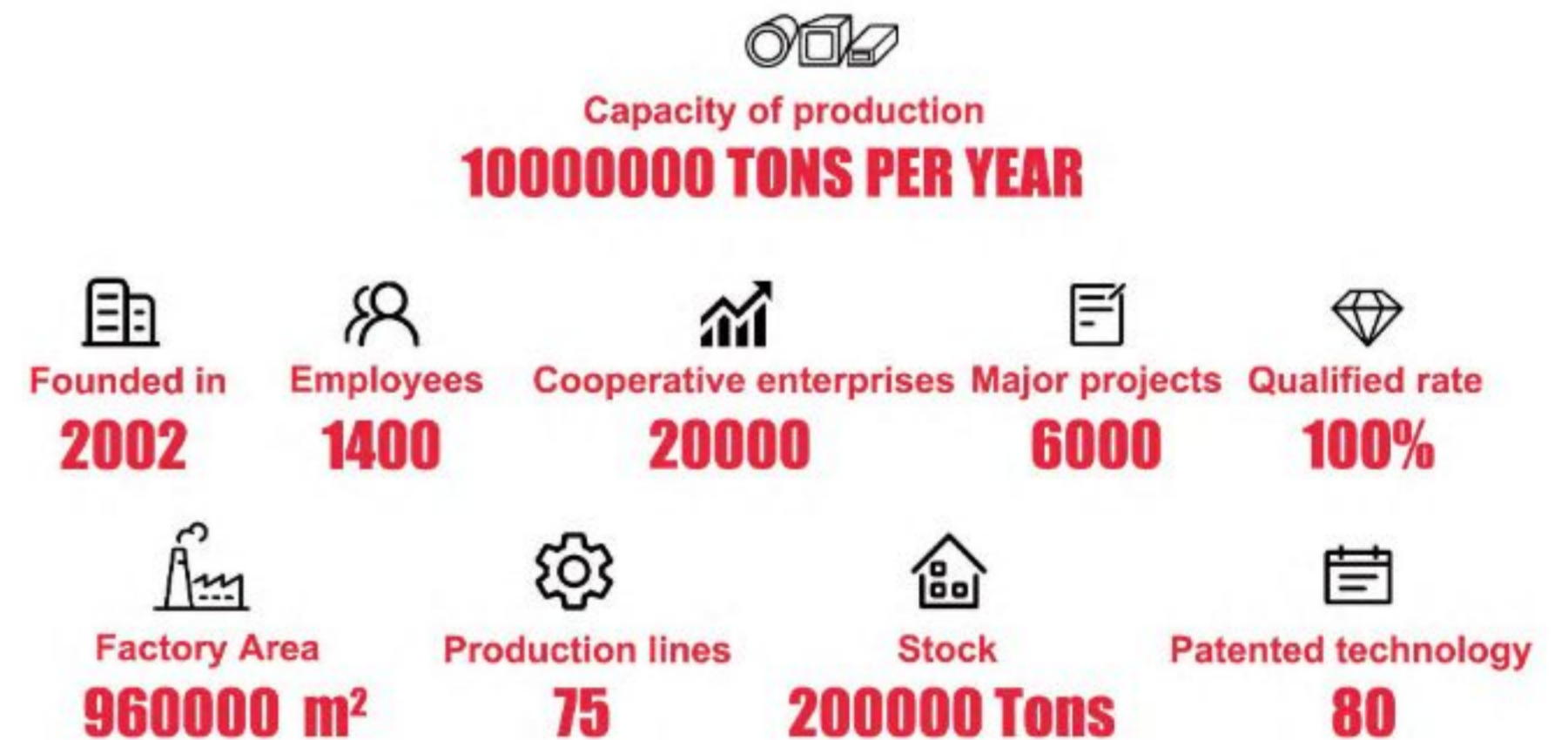
YUTANTAI is a large joint enterprise group that mainly producing structure hollow section and steel profiles, with a total registered capital of US \$90 million, a total area of 200 hectares, and more than 2000 employees, total 20 wholly-owned subsidiaries. YUANTAI Group is the leader of Chinese hollow section industry.

YUTANTAI Group has 51 black high-frequency welded steel pipe production lines, 10 hot-dip galvanized steel processing production lines, 10 pre-galvanized steel pipe production lines, 3 spiral welded pipe production lines, and 1 JCOE production line. Square pipe size range is 10x10x0.5mm~1000x1000x60mm, Rectangular size range is 10x15x0.5mm~800x1200x60mm and Circular pipe size range is 10.3mm~2032mm. Wall thickness range is from 0.5~80mm. It has more than 100 technical patents of steel hollow section. Production type includes ERW, HFW, LSAW, SSAW, SEAMLESS, Hot rolling, Cold drawing, Hot finishing etc. Raw materials mostly come from state-owned steel factories such as HBIS, SHOUGANG GROUP, BAOSTEEL, TPCO, HENGYANG etc.

YUTANTAI Group has annual production capacity of 5 million tons and a saturated annual production capacity of 10 million tons. Products are widely used in prefabricated steel structure residential buildings, glass curtain wall engineering, steel structure engineering, large venues, airport construction, high-speed roads, decorative guardrails, tower crane manufacturing, photovoltaic projects, greenhouse agricultural shantytowns, bridge manufacturing, shipbuilding and so on. YUANTAI products were used in many national key projects such as the National Stadium, the National Grand Theater, Beijing Daxing International Airport, Dubai Expo 2020, Qatar World Cup 2022, Mumbai New Airport, Hong Kong-Zhuhai-Macao Bridge, Egypt Agricultural Green House and so on. YUANTAI had establish good relationship with many EPC companies such as China Minmetals, China Construction Engineering, China Railway Construction, China National Machinery, Hangxiao Steel Structure, EVERSENDI, CLEVELAND BRIDGE, AL HANI, LIMAK and so on.

YUTANTAI Group continues to extend the industrial chain, expand industrial clusters, form scale advantages, and carry out extensive and in-depth cooperation on the high-quality transformation and upgrading of the hollow section industry, so as to make unremitting efforts for the green future of the steel industry.

## WHY CHOOSE YUANTAI DERUN





## RAW MATERIALS & STOCK

The raw materials for steel pipe manufacturing of YUANTAI come from HBIS, SHOUGANG GROUP, BAOSTEEL, TPCO, HENGYANG etc. and other large domestic well-known steel manufacturing enterprises, which provide customers with the greatest guarantee from the source.



Headquarters office building

R&D Department

QC Department

NO.4 factory



NO.3 factory



Yuantai Industry & Trade



Group building



Tangshan Factory



PRODUCTION EQUIPMENT



LARGE FORGING EQUIPMENT FOR LSAW STEEL PIPE



500 \* 500MM DIRECT MOLDING TECHNICAL (DFT) EQUIPMENT



ELECTRIC CONTROL AUTOMATION



HEAT TREATMENT EQUIPMENT



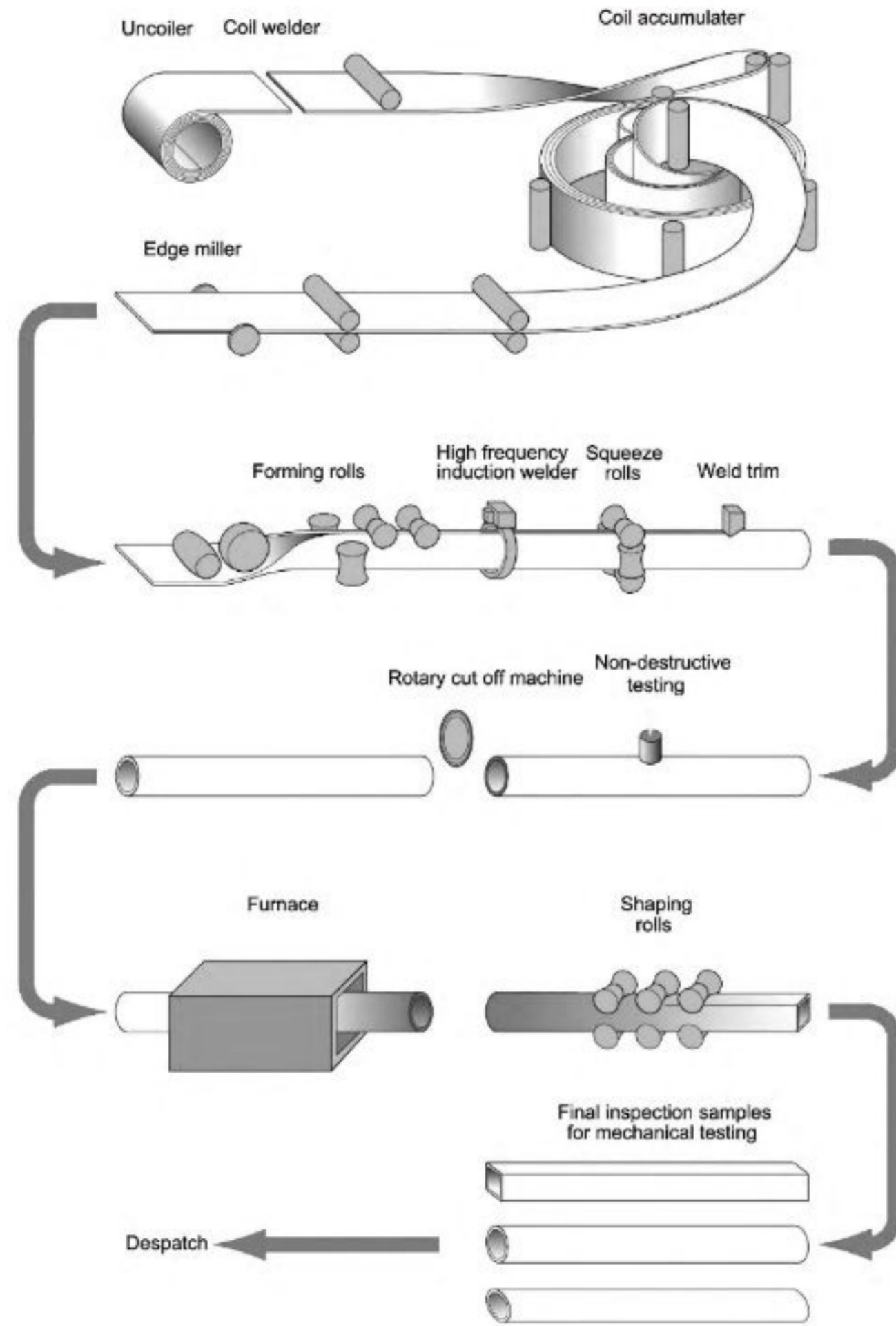
QUADRANGLE HEATING EQUIPMENT



BLACK HIGH-FREQUENCY WELDING EQUIPMENT

PRODUCTION PROCESS

PRODUCTION PROCESS FLOW CHART OF STEEL HOLLOW SECTIONS



R&D AND QC

Yuantai Derun Steel Pipe Manufacturing Group attaches great importance to R&D and quality control. Because strict quality control is the greatest guarantee, R&D and innovation of products is the basic task of enterprises of the brand.

The steel pipe manufacturing raw materials of the company come from HBIS, Shougang, Baotou Steel, Xintiangang, Rongcheng steel, Jinxi steel and other large-scale well-known steel manufacturing enterprises in China.

Experiments can be roughly divided into: chemical composition, yield strength, tensile strength, impact performance, etc





SQUARE RECTANGULAR STEEL PIPE DISPLAY



LARGE SQUARE PIPE



THICKWALL PIPE



SEAMLESS SQUARE PIPE



HDG PIPE



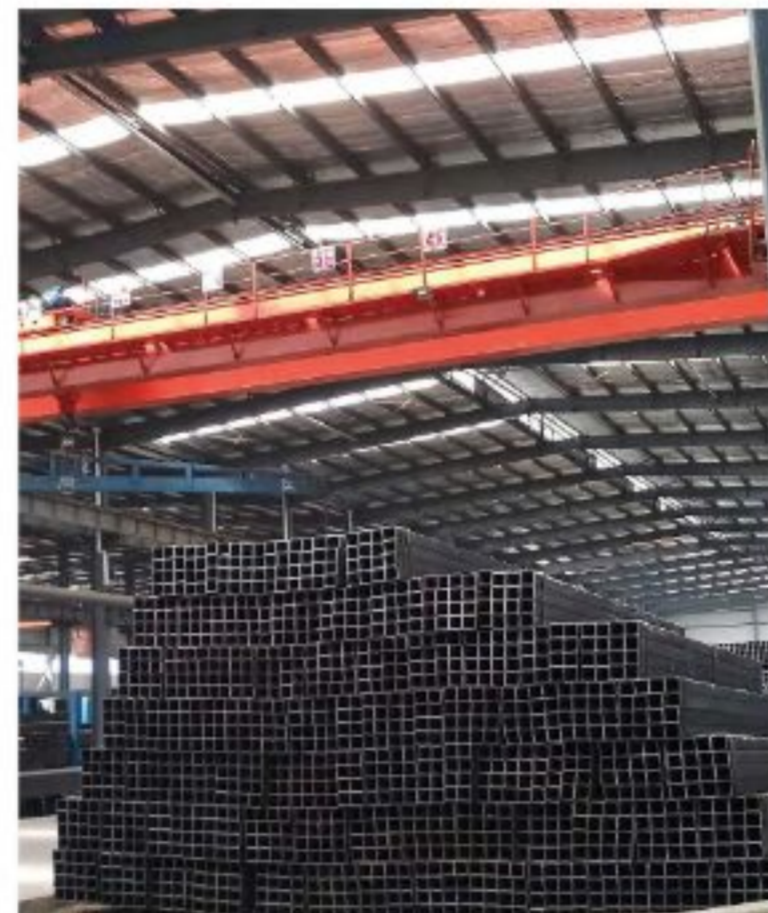
STAINLESS SQUARE PIPE



PRE GALVANIZED PIPE



SHARP CORNER SQUARE PIPE



SMALL SIZE PIPE



20000 TONS STOCK PER MONTH



SQUARE RECTANGULAR HOLLOW SECTION SPECIFICATION SHEET

O.D mm	W.T. mm	O.D mm	W.T. mm	O.D mm	W.T. mm	O.D mm	W.T. mm
20*20	1.3	60*120	1.5	180*180	3.0	300*800	9.5-9.75
	1.4		1.7		3.5-3.75		11.5-11.75
	1.5		1.8		4.5-4.75		12-13.75
	1.7		2.0		5.5-7.75		15-50
	1.8		2.2		9.5-9.75		
20*30	1.3	50*150	1.5	100*300	3.0-4.0	300*900	9.5-9.75
	1.4		1.7		4.5-9.75		11.5-11.75
	1.5		2.0		11.5-11.75		12-13.75
	1.7		2.2		12.5-12.75		15-50
	1.8		2.5-3.0		13.5-13.75		
25*25	1.3	60*140	1.5	200*200	3.0-4.0	300*900	9.5-9.75
	1.4		1.7		4.5-9.75		11.5-11.75
	1.5		2.0		11.5-11.75		12-13.75
	1.7		2.2		12.5-12.75		15-50
	1.8		2.5-3.0		13.5-13.75		
20*40	1.3	100*100	1.5	150*300	3.75	300*1000	9.5-9.75
	1.4		1.7		4.5-4.75		11.5-11.75
	1.5		2.0		5.5-6.3		12-13.75
	1.7		2.2		7.5-7.75		15-50
	1.8		2.5-3.0		9.5-9.75		
25*40	1.3	80*140	1.5	200*250	3.75	400*900	9.5-9.75
	1.4		1.7		4.5-4.75		11.5-11.75
	1.5		2.0		5.5-6.3		12-13.75
	1.7		2.2		7.5-7.75		15-50
	1.8		2.5-3.0		9.5-9.75		
30*30	1.3	60*160	1.5	200*300	3.75	500*900	9.5-9.75
	1.4		1.7		4.5-4.75		11.5-11.75
	1.5		2.0		5.5-6.3		12-13.75
	1.7		2.2		7.5-7.75		15-50
	1.8		2.5-3.0		9.5-9.75		
30*40	1.3	80*140	1.5	250*250	3.75	600*800	9.5-9.75
	1.4		1.7		4.5-4.75		11.5-11.75
	1.5		2.0		5.5-6.3		12-13.75
	1.7		2.2		7.5-7.75		15-50
	1.8		2.5-3.0		9.5-9.75		
40*40	1.3	100*120	1.5	200*300	3.75	700*700	9.5-9.75
	1.4		1.7		4.5-4.75		11.5-11.75
	1.5		2.0		5.5-6.3		12-13.75
	1.7		2.2		7.5-7.75		15-50
	1.8		2.5-3.0		9.5-9.75		
40*50	1.3	75*150	1.5	200*400	3.75	500*1000	9.5-9.75
	1.4		1.7		4.5-4.75		11.5-11.75
	1.5		2.0		5.5-6.3		12-13.75
	1.7		2.2		7.5-7.75		15-50
	1.8		2.5-3.0		9.5-9.75		
30*60	1.3	80*160	1.5	300*300	3.75	700*800	9.5-9.75
	1.4		1.7		4.5-4.75		11.5-11.75
	1.5		2.0		5.5-6.3		12-13.75
	1.7		2.2		7.5-7.75		15-50
	1.8		2.5-3.0		9.5-9.75		
40*60	1.3	100*150	1.5	280*280	3.75	600*1100	9.5-9.75
	1.4		1.7		4.5-4.75		11.5-11.75
	1.5		2.0		5.5-6.3		12-13.75
	1.7		2.2		7.5-7.75		15-50
	1.8		2.5-3.0		9.5-9.75		
50*50	1.3	120*120	1.5	200*500	3.75	500*1100	9.5-9.75
	1.4		1.7		4.5-4.75		11.5-11.75
	1.5		2.0		5.5-6.3		12-13.75
	1.7		2.2		7.5-7.75		15-50
	1.8		2.5-3.0		9.5-9.75		
40*80	1.3	100*150	1.5	250*450	3.75	600*1000	9.5-9.75
	1.4		1.7		4.5-4.75		11.5-11.75
	1.5		2.0		5.5-6.3		12-13.75
	1.7		2.2		7.5-7.75		15-50
	1.8		2.5-3.0		9.5-9.75		
50*70	1.3	100*150	1.5	300*400	3.75	700*900	9.5-9.75
	1.4		1.7		4.5-4.75		11.5-11.75
	1.5		2.0		5.5-6.3		12-13.75
	1.7		2.2		7.5-7.75		15-50
	1.8		2.5-3.0		9.5-9.75		
50*80	1.3	100*150	1.5	350*350	3.75	800*800	9.5-9.75
	1.4		1.7		4.5-4.75		11.5-11.75
	1.5		2.0		5.5-6.3		12-13.75
	1.7		2.2		7.5-7.75		15-50
	1.8		2.5-3.0		9.5-9.75		
60*60	1.3	100*200	1.5	200*600	3.75	800*1100	9.5-9.75
	1.4		1.7		4.5-4.75		11.5-11.75
	1.5		2.0		5.5-6.3		12-13.75
	1.7		2.2		7.5-7.75		15-50
	1.8		2.5-3.0		9.5-9.75		
60*80	1.3	120*180	1.5	350*400	3.75	700*1100	9.5-9.75
	1.4		1.7		4.5-4.75		11.5-11.75
	1.5		2.0		5.5-6.3		12-13.75
	1.7		2.2		7.5-7.75		15-50
	1.8		2.5-3.0		9.5-9.75		
70*70	1.3	150*150	1.5	300*450	3.75	900*900	9.5-9.75
	1.4		1.7		4.5-4.75		11.5-11.75
	1.5		2.0		5.5-6.3		12-13.75
	1.7		2.2		7.5-7.75		15-50
	1.8		2.5-3.0		9.5-9.75		
40*100	1.3	100*250	1.5	200*600	3.75	800*1100	9.5-9.75
	1.4		1.7		4.5-4.75		11.5-11.75
	1.5		2.0		5.5-6.3		12-13.75
	1.7		2.2		7.5-7.75		15-50
	1.8		2.5-3.0		9.5-9.75		
60*80	1.3	150*200	1.5	300*500	3.75	900*1000	9.5-9.75
	1.4		1.7		4.5-4.75		11.5-11.75
	1.5		2.0		5.5-6.3		12-13.75
	1.7		2.2		7.5-7.75		15-50
	1.8		2.5-3.0		9.5-9.75		
70*70	1.3	150*200	1.5	400*400	3.75	950*950	9.5-9.75
	1.4		1.7		4.5-4.75		11.5-11.75
	1.5		2.0		5.5-6.3		12-13.75
	1.7		2.2		7.5-7.75		15-50
	1.8		2.5-3.0		9.5-9.75		
50*100	1.3	140*140	1.5	300*600	3.75	900*1100	9.5-9.75
	1.4		1.7		4.5-4.75		11.5-11.75
	1.5		2.0		5.5-6.3		12-13.75
	1.7		2.2		7.5-7.75		15-50
	1.8		2.5-3.0		9.5-9.75		
60*90	1.3	160*160	1.5	400*600	3.75	1100*1000	9.5-9.75
	1.4		1.7		4.5-4.75		11.5-11.75
	1.5		2.0		5.5-6.3		12-13.75
	1.7		2.2		7.5-7.75		15-50
	1.8		2.5-3.0		9.5-9.75		
60*100	1.3	160*160	1.5	500*500	3.75	1100*1100	9.5-9.75
	1.4		1.7		4.5-4.75		11.5-11.75
	1.5		2.0		5.5-6.3		12-13.75
	1.7		2.2		7.5-7.75		15-50
	1.8		2.5-3.0		9.5-9.75		
75*75	1.3	160*160	1.5	500*500	3.75	1100*1100	9.5-9.75
	1.4		1.7		4.5-4.75		11.5-11.75
	1.5		2.0		5.5-6.3		12-13.75
	1.7		2.2		7.5-7.75		15-50
	1.8		2.5-3.0		9.5-9.75		
80*80	1.3	160*160	1.5	500*500	3.75	1100*1100	9.5-9.75
	1.4		1.7		4.5-4.75		11.5-11.75
	1.5		2.0		5.5-6.3		12-13.75
	1.7		2.2		7.5-7.75		15-50
	1.8		2.5-3.0		9.5-9.75		

GALVANIZED SQUARE RECTANGULAR STEEL PIPE SPECIFICATION SHEET

O. D. (mm)	W. T. (mm)	O. D. (mm)	W. T. (mm)	O. D. (mm)	W. T. (mm)	O. D. (mm)	W. T. (mm)
25*25	1.7	120*120	2.5	40*80	1.5	80*100	2.5
	2.0		2.75		1.7		2.75
	2.5		3.0		2.0		3.0
	2.75		3.5		2.2		3.5
	3.0		3.75		2.5		3.75
30*30	1.5	120*120	1.7	40*80	1.5	80*100	2.5
	1.7		2.0		1.7		2.75
	2.0		2.2		2.0		3.0
	2.2		2.5		2.2		3.5
	2.5		2.75		2.5		4.5
40*40	1.5	150*150	1.7	50*70	2.2	80*120	3.0
	1.7		2.0		2.5		3.5
	2.0		2.2		2.75		4.5
	2.2		2.5		3.0		5.5
	2.5		2.75		3.5		7.5
50*50	1.5	200*200	1.7	50*90	2.2	80*140	3.0
	1.7		2.0		2.5		4.5
	2.0		2.2		2.75		5.5
	2.2		2.5		3.0		7.5
	2.5		2.75		3.5		9.5
60*60	1.5	200*200	1.7	50*100	2.2	80*160	3.0
	1.7		2.0		2.5		4.5
	2.0		2.2		2.75		5.5
	2.2		2.5		3.0		7.5
	2.5		2.75		3.5		9.5
70*70	1.5	200*200	1.7	50*100	2.2	80*160	3.0
	1.7		2.0		2.5		4.5
	2.0		2.2		2.75		5.5
	2.2		2.5		3.0		7.5
	2.5		2.75		3.5		9.5
80*80	1.5	200*200	1.7	50*100	2.2	80*160	3.0
	1.7		2.0		2.5		4.5
	2.0		2.2		2.75		5.5
	2.2		2.5		3.0		7.5
	2.5		2.75		3.5		9.5



CIRCULAR STEEL TUBE DISPLAY



ERW STEEL PIPE



LSAW STEEL PIPE



HOT DIPPED GALVANIZED STEEL PIPE



SEAMLESS STEEL PIPE



SSAW STEEL PIPE



PRE GALVANIZED STEEL PIPE



API STEEL PIPE



SCAFFOLD STEEL PIPE



**CIRCULAR STEEL PIPE SPECIFICATION SHEET**

O. D.				W. T.				O. D.				W. T.				O. D.				W. T.				O. D.				W. T.							
inch	MM	SCH	MM	inch	MM	SCH	MM	inch	MM	SCH	MM	inch	MM	SCH	MM	inch	MM	SCH	MM	inch	MM	SCH	MM	inch	MM	SCH	MM	inch	MM	SCH	MM	inch	MM	SCH	MM
1/8"	10.3	10S	1.24	2"	60.3	10S	2.77	5"	141.3		3.96	8"	219.1	140	20.62	12"	323.8		31.75	18"	457	XS	12.7	24"	610	30	14.27	56"	1422		12.7				
1/8"	10.3	STD-40	1.73	2"	60.3		3.18	5"	141.3		4.78	8"	219.1	XXS	22.23	12"	323.8	160	33.32	18"	457	40	14.27	24"	610		15.88	60"	1524		9.53				
1/8"	10.3	XS-80	2.41	2"	60.3	STD-40	3.91	5"	141.3		5.56	8"	219.1	160	23.01	14"	355.6	10	6.35	18"	457		15.88	24"	610	40	17.48	60"	1524		12.7				
1/4"	13.7	10S	1.65	2"	60.3	XS-80	5.54	5"	141.3	STD-40	6.55	8"	219.1		25.4	14"	355.6	20	7.92	18"	457		17.48	24"	610		19.05	64"	1626		9.53				
1/4"	13.7	STD-40	2.24	2"	60.3	160	8.74	5"	141.3		7.14	10"	273		4.78	14"	355.6		8.74	18"	457	60	19.05	24"	610		20.62	64"	1626		12.7				
1/4"	13.7	XS-80	3.02	2"	60.3	XXS	11.07	5"	141.3		7.92	10"	273		5.16	14"	355.6	STD-30	9.53	18"	457	80	23.83	24"	610	60	24.61	68"	1727		12.7				
3/8"	17.1	10S	1.65	2 1/2"	73	5S	2.11	5"	141.3	XS-80	9.53	10"	273		5.56	14"	355.6		10.31	18"	457		25.4	24"	610		25.4	72"	1829		12.7				
3/8"	17.1	STD-40	2.31	2 1/2"	73	10S	3.05	5"	141.3	120	12.7	10"	273	20	6.35	14"	355.6	40	11.13	18"	457		26.97	24"	610		26.97	76"	1930		12.7				
3/8"	17.1	XS-80	3.2	2 1/2"	73	30	4.78	5"	141.3	160	15.88	10"	273		7.09	14"	355.6	XS	12.7	18"	457		28.58	24"	610		30.18	80"	2032		14.27				
1/2"	21.3	5S	1.05	2 1/2"	73	STD-40	5.16	5"	141.3	XXS	19.05	10"	273	30	7.8	14"	355.6		14.27	18"	457	100	29.36	24"	610	80	30.96								
1/2"	21.3	10S	2.11	2 1/2"	73	XS-80	7.01	6"	168.3		4.37	10"	273		8.74	14"	355.6	60	15.09	18"	457		30.18	24"	610	100	38.89								
1/2"	21.3	STD-40	2.77	2 1/2"	73	160	9.53	6"	168.3		4.78	10"	273	STD-40	9.27	14"	355.6	80	19.05	18"	457		31.75	24"	610	120	46.02								
1/2"	21.3	XS-80	3.73	2 1/2"	73	XXS	14.02	6"	168.3		5.16	10"	273		11.13	14"	355.6	100	23.83	18"	457	120	34.93	24"	610	140	52.37								
1/2"	21.3	160	4.78	3"	88.9	5S	2.11	6"	168.3		5.56	10"	273	XS-60	12.7	14"	355.6		25.4	18"	457	140	39.67	26"	660	STD	9.53								
1/2"	21.3	XXS	7.47	3"	88.9		2.77	6"	168.3		6.35	10"	273		14.27	14"	355.6	120	27.79	18"	457	160	45.24	26"	660	XS-20	12.7								
3/4"	26.7	5S	1.65	3"	88.9	10S	3.05	6"	168.3	STD-40	7.11	10"	273	80	15.09	14"	355.6	140	31.75	18"	457		8.74	26"	660		17.48								
3/4"	26.7	10S	2.11	3"	88.9		3.18	6"	168.3		7.92	10"	273		15.88	14"	355.6	160	35.71	18"	457	STD-20	9.53	26"	660		19.05								
3/4"	26.7	STD-40	2.87	3"	88.9		3.58	6"	168.3		8.74	10"	273	100	18.26	14"	355.6	160	35.71	18"	457		10.31	28"	711	STD	9.53								
3/4"	26.7	XS-80	3.91	3"	88.9		3.96	6"	168.3		9.53	10"	273		20.62	14"	406.4	10	6.35	18"	457		11.13	28"	711	XS-20	12.7								
3/4"	26.7	160	5.56	3"	88.9	STD-40	5.49	6"	168.3	XS-80	10.97	10"	273	120	21.44	16"	406.4	20	7.92	18"	457	XS-30	12.7	28"	711		17.48								
3/4"	26.7	XXS	7.82	3"	88.9	XS-80	7.62	6"	168.3	120	14.27	10"	273		22.23	16"	406.4		7.92	18"	457		14.27	28"	711		19.05								
1"	33.4	5S	1.65	3"	88.9	160	11.13	6"	168.3	120	14.27	10"	273		23.83	16"	406.4	20	7.92	18"	457	40	15.09	30"	762	STD	9.53								
1"	33.4	10S	2.77	3"	88.9	XXS	15.24	6"	168.3		15.88	10"	273	XXS	25.4	16"	406.4	STD-30	9.53	18"	457		15.88	30"	762	XS-20	12.7								
1"	33.4	STD-40	3.38	3 1/2"	101.6	5S	2.11	6"	168.3	160	18.26	10"	273	160	28.58	16"	406.4		10.31	18"	457		17.48	32"	813	STD	9.53								
1"	33.4	XS-80	4.55	3 1/2"	101.6	10S	3.05	6"	168.3		19.05	10"	273		31.75	16"	406.4	XS-40	12.7	18"	457		19.05	32"	813	XS-20	12.7								
1"	33.4	160	6.35	3 1/2"	101.6	30	4.78	6"	168.3	XXS	21.95	12"	323.8	20	6.35	16"	406.4		14.27	18"	457	60	20.62	34"	864	STD	9.53								
1"	33.4	XXS	9.09	3 1/2"	101.6	STD-40	5.74	6"	168.3		22.23	12"	323.8		7.14	16"	406.4		14.27	18"	457	80	26.19	34"	864	XS-20	12.7								
1 1/4"	42.2	5S	1.65	3 1/2"	101.6	XS-80	8.08	8"	219.1		4.78	12"	323.8	30	8.38	16"	406.4	60	16.66	18"	457		30.18	36"	914	STD	9.53								
1 1/4"	42.2	10S	2.77	4"	114.3	5S	2.11	8"	219.1		5.16	12"	323.8		8.74	16"	406.4		17.48	18"	457		30.18	36"	914	XS-20	12.7								
1 1/4"	42.2	STD-40	3.56	4"	114.3	10S	3.05	8"	219.1	20	6.35	12"	323.8	STD	9.53	16"	406.4		17.48	18"	457	100	32.54	38"	965	STD	9.53								
1 1/4"	42.2	XS-80	4.85	4"	114.3		3.96	8"	219.1	30	7.04	12"	323.8	40	10.31	16"	406.4		20.62	18"	457	120	38.1	40"	1016	STD	9.53								
1 1/4"	42.2	160	6.35	4"	114.3		4.37	8"	219.1		7.92	12"	323.8		11.13	16"	406.4	80	21.44	18"	457	140	44.45	40"	1016	XS	12.7								
1 1/4"	42.2	XXS	9.7	4"	114.3		4.78	8"	219.1	STD-40	8.18	12"	323.8	XS	12.7	16"	406.4		25.4	18"	457	160	50.01	42"	1067	STD	9.53								
1 1/2"	48.3	5S	1.65	4"	114.3		5.16	8"	219.1		8.74	12"	323.8	60	14.27	16"	406.4	100	26.19	18"	457	180	58.42	42"	1067	XS	12.7								
1 1/2"	48.3	10S	2.77	4"	114.3		5.56	8"	219.1		9.53	12"	323.8		15.88	16"	406.4	120	30.96	18"	457	STD-20	9.53	44"	1118	STD	9.53								
1 1/2"	48.3	STD-40	3.68	4"	114.3	STD-40	6.02	8"	219.1	60	10.31	12"	323.8	80	17.48	16"	406.4		31.75	18"	457		12.7	44"	1118	XS	12.7								
1 1/2"	48.3	XS-80	5.08	4"	114.3		6.35	8"	219.1		11.13	12"	323.8		19.05	16"	406.4	140	36.53	18"	457		15.88	46"	1168	STD	9.53								
1 1/2"	48.3	160	7.14	4"	114.3		7.14	8"	219.1	XS-80	12.7	12"	323.8		20.62	16"	406.4	160	40.49	18"	457		17.48	46"	1168	XS	12.7								
1 1/2"	48.3	XXS	10.15	4"	114.3		7.92	8"	219.1		14.27	12"	323.8	100	21.44	16"	406.4		40.49	18"	457		19.05	48"	1219	STD	9.53								
2"	60.3	5S	1.65	4"	114.3	XS-80	8.56	8"	219.1	100	15.09	12"	323.8		23.83	16"	406.4		40.49	18"	457	STD	9.53	48"	1219	XS	12.7								
2"	60.3		2.11	4"	114.3	120	11.13	8"	219.1		15.88	12"	323.8	XXS	25.4	16"	406.4		40.49	18"	457		20.62	52"	1321		9.53								
				4"	114.3	160	13.49	8"	219.1	120	18.26	12"	323.8		26.97	16"	406.4		40.49	18"	457	STD	9.53	52"	1321		12.7								
				4"	114.3	XXS	17.12	8"	219.1		19.05	12"	323.8	140	28.58	16"	406.4		40.49	18"	457		11.13	56"	1422		9.53								

Standards: ASTM A500/A 501/A53/A106,EN10219/10210,JIS G3444,GB/T6725/3091/8163,AS1163, BS1387,ISO65 CSA G40.20/G40.21,API 5L

Type: ERW (10.3-609mm) LSAW(355.4-1420mm) SSAW(219-2032mm) Seamless(21.3-820mm)

Surface treatment: bare \Oiled\painted\galvanized

MOQ: 2-5 Tons

Capacity of production:10000000 Tons per year

Payment Method: TT/LC

Port of shipment: Xin gang port Tianjin China

**CIRCULAR STEEL PIPE SPECIFICATION SHEET**

O. D.				W. T.				O. D.				W. T.				O. D.				W. T.											
inch	MM	SCH	MM	inch	MM	SCH	MM	inch	MM	SCH	MM	inch	MM	SCH	MM	inch	MM	SCH	MM	inch	MM	SCH	MM	inch	MM	SCH	MM	inch	MM	SCH	MM
12"	323.8		31.75	18"	457	XS	12.7	24"	610	30	14.27	56"	1422		12.7	60"	1524		9.53	64"	1626		12.7	68"	1727</						



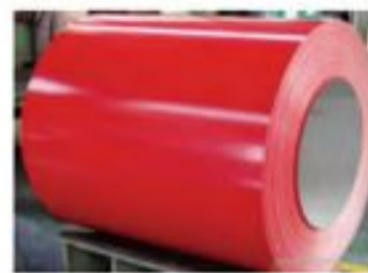
**COLOR COATED STEEL COIL**

The color coated sheet is made by proceeding the chemistry treating ( the degrease, phosphorus, chromium hydrochloric acid passivation) on the surface of steel sheet (zinc sheet, aluzinc sheet).then draw the coating, again baking. It is widely used in such field as architecture, electrical home appliances, furniture,communal facilities and transportation,

Thickness	0.2-1.5mm
Width	800mm,914mm,1000mm,1200mm,1219mm,1250mm, or other width
Length	in roll, 1000mm to 6000mm or as per customers request
Base Plate	Z60-Z275,AZ30-AZ150
Painting Thickness	Top side: 10-20microns
	Primer: 5~7microns Back side: 5~7microns
Color System	RAL Color System or as per buyer's color sample
Usual Coil Weight	3 ton to 8 ton
Inner Diameter	508mm,610mm

Sectional structure diagram of color coated plate

- Finished Coating
- Printer
- Chemical Conversion Layer
- Metallic Coating
- Cold Rolled Steel Sheet



**CORRUGATED SHEET**

Corrugated sheet is produced by galvanized coil, alu-zinc coil, color coated coil. The Type include decking sheet, wave roofing, antique tile and so on. Widely used in warehouse, factory, exhibition center. It can be used both for wall and roof

Material	Galvanized sheet, Aluzinc sheet, Color coated sheet
Thickness	0.14-1.0mm
Width	600mm to 1100mm
Length	up to client option

1.YX18-80-850 	2.YX25-287-860 	3.YX28-280-840 	4.YX10-130-910 
5.YX25-205-820 	6.YX35-125-750 	7.YX15-225-900 	8.YX51-410-820 
9.YX76-380-760 	10.YX76-344-688 	11.YX51-250-750 	12.YX75-200-600 

**HOT ROLLED STEEL PLATE & COLD ROLLED STEEL COIL GALVANIZED AND ALUMINUM ZINC COATED COIL**

Main Grade	A36, Q235, Q235, S5400, SPHC, ST37.52, SAE1006/1008/1018
Thickness	1.5mm-200mm
Usual Width	1000,1210,1219,1220,1250,1500,1800,2000, etc
Length	Coil or as custom 's request



Main Grade	SGCC(SGLCC),SGCD(SGLCD),SGHC,DC51D,DX51D-DX54D,S350GD,S450GD,S550GD
Thickness	0.12-4.0mm
Width	660mm to 1500mm
Zinc coating	Z60 to Z275, AZ40 to Az150, G30 to G90
Inner Diameter	508mm, 610mm



PV(PHOTOVOLTAIC) SUPPORT AND PARTS

PV(PHOTOVOLTAIC) SUPPORT AND PARTS

**C型钢 C TYPE STEEL**

SPECIFICATIONS: a---10~30mm b---20~120mm  
t---1.6~5mm h---20~350mm

**U型钢 U TYPE STEEL**

SPECIFICATIONS: a---41.3mm b---41.3mm  
c---22.2mm h---2.5mm

**Z型钢 Z TYPE STEEL**

SPECIFICATIONS: a---120~350mm b---40~85mm  
c---40~85mm t---1.6~3mm

**几型钢 几 TYPE STEEL**

SPECIFICATIONS: a---30~45mm b---50~70mm  
h---50~70mm t---1.5~2mm

**螺旋地桩 SCREW GROUND PILE**

SPECIFICATIONS: OD---60~89mm  
Length---600~3000mm

**支架 PV SUPPORT**

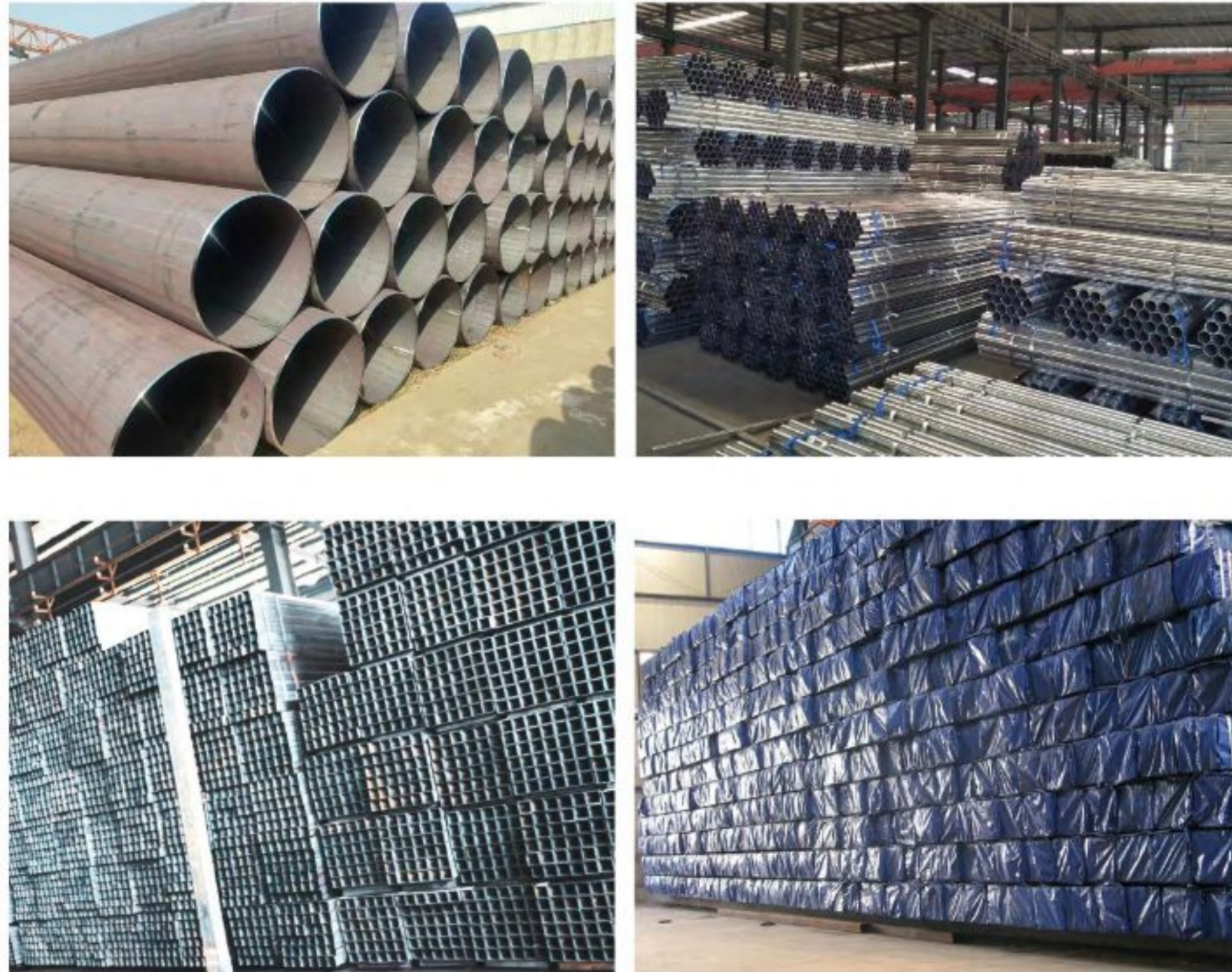
PV SUPPORT

 T型连接件 T-CONNECTOR	 U型预埋栓 U-SHAPED EMBEDDED BOLT	 挂钩 HOOK	 四孔三角 FOUR HOLE TRIANGLE
 立柱底座 COLUMN BASE	 常规光伏支架 CONVENTIONAL PV SUPPORT	 八孔三角 EIGHT-HOLE TRIANGLE	 檩条连接件(外连) PURLIN CONNECTOR (EXTERNAL CONNECTION)
 铝合金梯形夹具 ALUMINUM ALLOY TRAPEZOIDAL CLAMP	 铝合金角驰夹具 ALUMINUM ALLOY ANGLE CLAMP	 铝合金P型夹具 ALUMINUM ALLOY P-TYPE CLAMP	 铝合金中压 ALUMINUM ALLOY MEDIUM PRESSURE
 角码 CORNER CONNECTOR	 双玻中压 DOUBLE GLASS MEDIUM PRESSURE	 双玻边压 DOUBLE GLASS EDGE PRESSURE	 抱箍 HOSE CLAMP
 直连接 DIRECT CONNECTION	 两孔底座 TWO-HOLE BASE	 塑翼螺栓 PLASTIC WING BOLT	 组件边压套 COMPONENT SIDE PRESSING SLEEVE



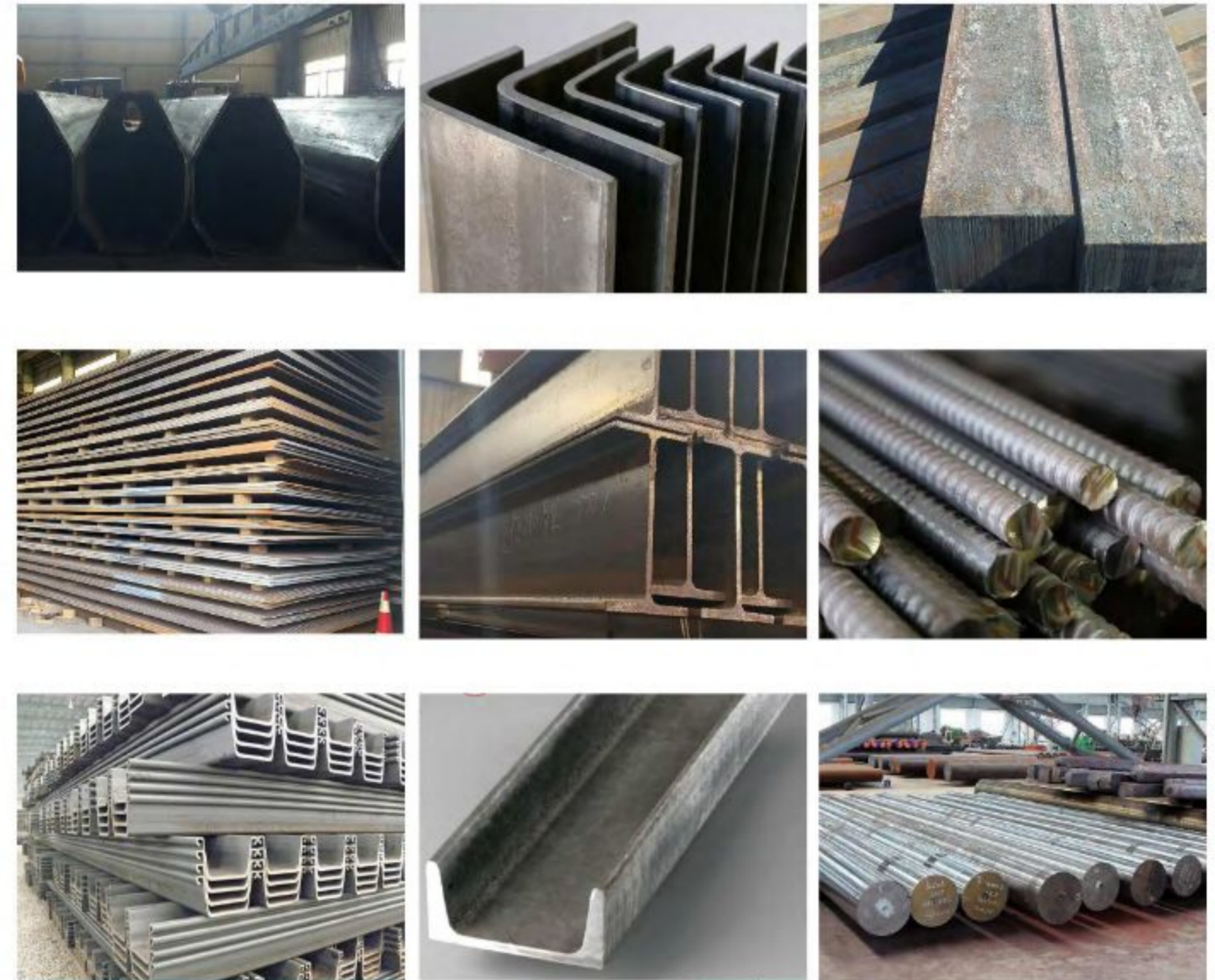
**STEEL PROFILE DISPLAY**

Yuantai Derun Steel has a stock of 200000 tons. The existing molds can produce nearly 6000 kinds of steel profiles, which can be customized. For example, LSAW steel pipes, ERW steel pipes, pre-galvanized steel pipes, double-sided submerged arc welded steel pipes, high-quality seamless carbon steel pipes, hot-dip galvanized steel pipes, cold-formed steel hollow sections, and heat-treated square rectangular welded pipes. At present, the maximum section size of square steel pipe can reach 1000 × 1000mm, the maximum thickness can reach 60mm, and the maximum length can reach 24m. The maximum section size of round steel pipe can reach 2032mm, the maximum thickness can reach 80mm, and the maximum length can reach 50M.



**STEEL PROFILE DISPLAY**

special-shaped tubes, C-shaped steel, Z-shaped steel, U-shaped steel, H-shaped steel, angle steel, channel steel, flat steel, round steel, square steel, Building reinforcement, Used in photovoltaic solar support, electric iron towers, Agricultural greenhouses, traffic facilities guardrails, high-speed column tubes and other businesses.





### PROJECT CASE

Yuantai Derun products have been widely used in prefabricated steel structure residential buildings, steel structure projects, glass curtain walls, steel structure venues, workshops, photovoltaic projects, bridge structures, tower crane, manufacturing, high-speed, urban road guardrails; Ship and automobile manufacturing agricultural vehicles, motorcycles, bicycle frames, fitness equipment, machinery manufacturing; Container keel, storage shelf, door and window decoration, furniture manufacturing; Agricultural greenhouses, power facilities, pipelines, and other production and living areas. Yuantai Derun has provided cooperative production schemes for more than 6000 projects

of various types, and has been highly praised in major construction projects. "Yuantai Derun" brand rectangular tube is the only supplier of 70000 tons rectangular tube products for the "the Belt and Road" Egyptian Agricultural Greenhouse Project of the Ministry of Agriculture of China, the only supplier of 115000 tons hot-dip galvanized structural pipe piles for the Qinghai ten million watt photovoltaic project, as well as the Hong Kong Zhuhai Macao Bridge Project, the National Stadium, the National Grand Theater, Cairo Central Business District, Egypt, Google Tower in Singapore, Kuwait Airport, Dubai World Expo 2020, Qatar World Cup and other global key projects, Yuantai Derun all participated.



Qinghai 10 Million Watt PV Project



Lam Tin Tunnel project



Binding bridge of large container ship



Three Gorges Dam



Daxing International Airport



Hong Kong-Zhuhai-Macao Bridge



The National Grand Theater



Kallang Football Facility



Hong Kong Airport



Asian Infrastructure Investment Bank



Cairo CBD, Egypt



Dubai Hill



Google Building Singapore



Qatar World Cup venues



Shanghai World Expo venues



Dubai Expo 2020



Kuwait Airport



Egypt Feidan Greenhouse Project



COOPERATIVE PARTNER





CERTIFICATE HONORS



Top 500 private enterprises



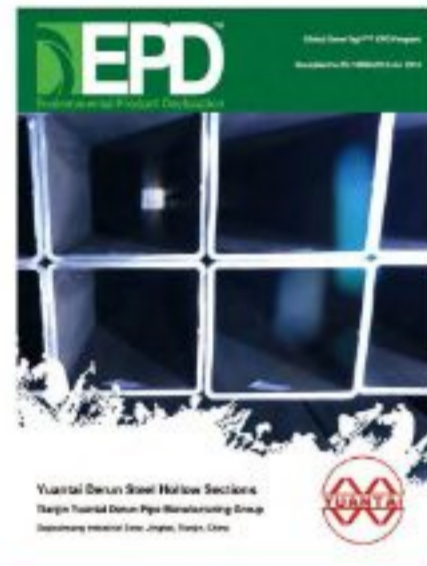
ISO 9001



ISO 45001



ISO 14001



EPD OF LEED



PHD OF LEED



JIS



EN10210



BV



DNV

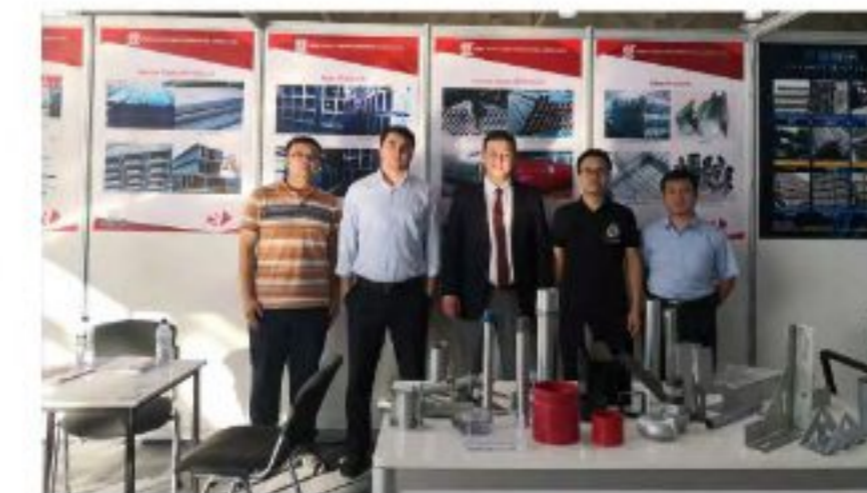
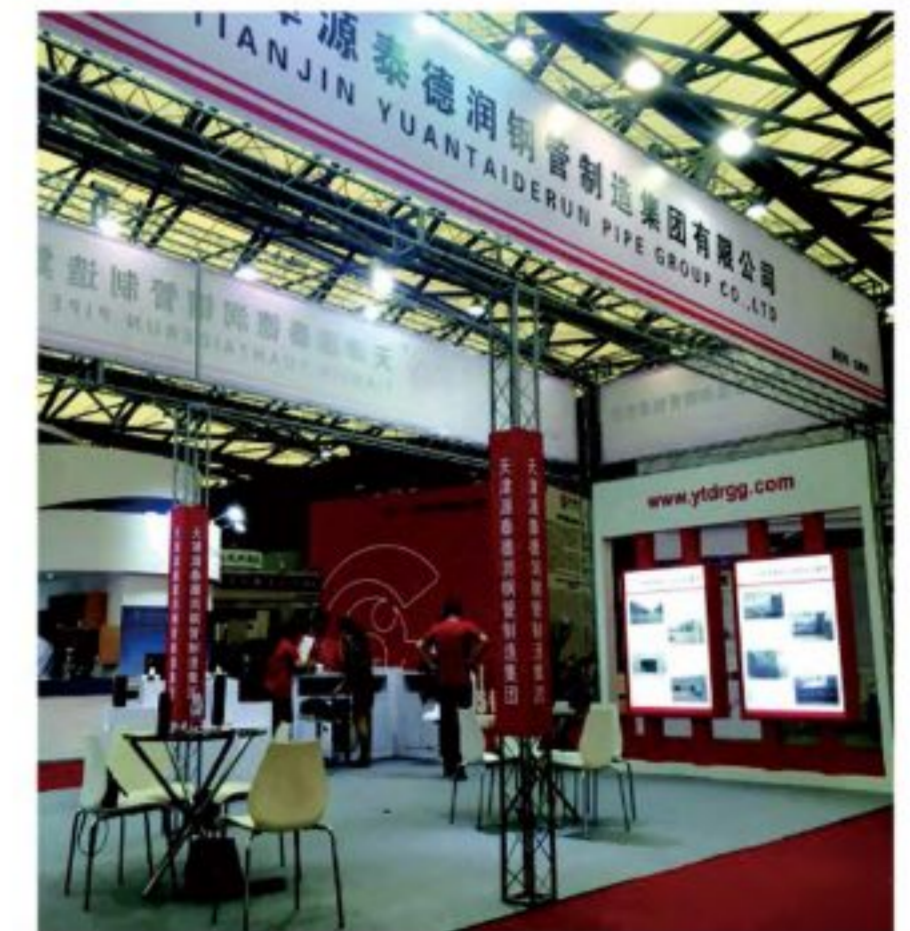
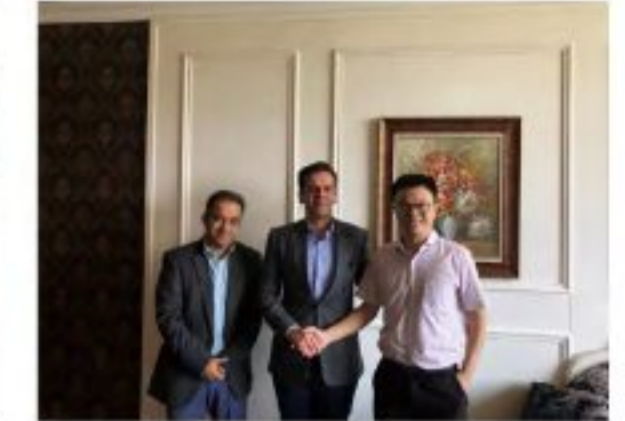


EN10219



BC1

CUSTOMERS AND EXHIBITIONS





MARKET

A small victory lies in wisdom, and a big victory lies in virtue. The world pattern is changing, and the process of global economic integration has brought new opportunities and prosperity. The prosperity of the country cannot be separated from the hard and excellent efforts of the creators, and the new era calls for entrepreneurship. In the face of opportunities, we should jointly meet new challenges. The Yuantai people are fully prepared and ready to go.



After years of efforts, Tianjin Yuantai Derun Group has begun to take shape. At present, our steel pipe products have been exported to more than 100 countries and regions. We will focus on the global advanced manufacturing, continue to improve the business ability, reduce the management cost, and maximize the benefit of partners. Go hand in hand for long-term .